



# FREIGHT FORWARDING SERVICES




GMP Trasporti is freight forwarding company founded in 2017 by Michał and Piotr. We specialize in providing logistics solutions for businesses of all sizes, helping them to transport their goods across the Europe by road. Starting from scratch throughout the years GMP Trasporti expanded, hiring now 20 professionals and being responsible for almost 7.000 shipments a year.



**Michał Przybytek**  
Owner



**Piotr Pawlik**  
Owner

The background of the slide is a photograph of a long, straight asphalt road stretching into the distance under a dramatic sunset sky. The sun is low on the horizon, creating a bright glow and long shadows. The sky is filled with scattered clouds, some of which are illuminated from below. The road is flanked by green grass and trees. A large green triangle is in the top left corner, and a white triangle is in the bottom right corner.

We offer range of road transport services and with our extensive network of partners, we are able to offer competitive rates and efficient services, ensuring that your goods arrive at their destination on time and in good condition.



# OUR VEHICLES



**TILTVAN**  
**(3.5TMGVW)**

Capacity	1000* KGs
Dimensions	480x220x260* CMs
Available Equipment	ADR, FRIGO, TAIL-LIFT



**TRUCK**  
**(7.5TMGVW)**

Capacity	3200* KGs
Dimensions	630x245x265* CMs
Available Equipment	ADR, FRIGO, TAIL-LIFT



**TRUCK**  
**(18TMGVW)**

Capacity	6000* KGs
Dimensions	920x245x270* CMs
Available Equipment	TAIL-LIFT

\*given data is maximum available capacity & dimensions therefore it may differ

# OPERATING AREA

## EUROPEAN UNION

It's our main operating area.  
Most of our shipments are arranged between countries of European Union while most of our Clients are located in Holland, Belgium, Germany and Italy.



## GREAT BRITAIN

Brexit caused a lot of confusion and trouble for many. We quickly adapted to new situation and learnt how to move your cargo swift and smoothly there. We can help you out with custom clearance as well.



## SWITZERLAND

Whether it's a border with Germany, Italy, Austria or France - we will deal with it. Our Team understands procedures of custom clearance and on demand can help you organize one.



## NORWAY

Shipping to Norway might be troublesome due to custom clearance and distance to cover. We are however experienced in Scandinavian deliveries so we bring you best service there in no time.

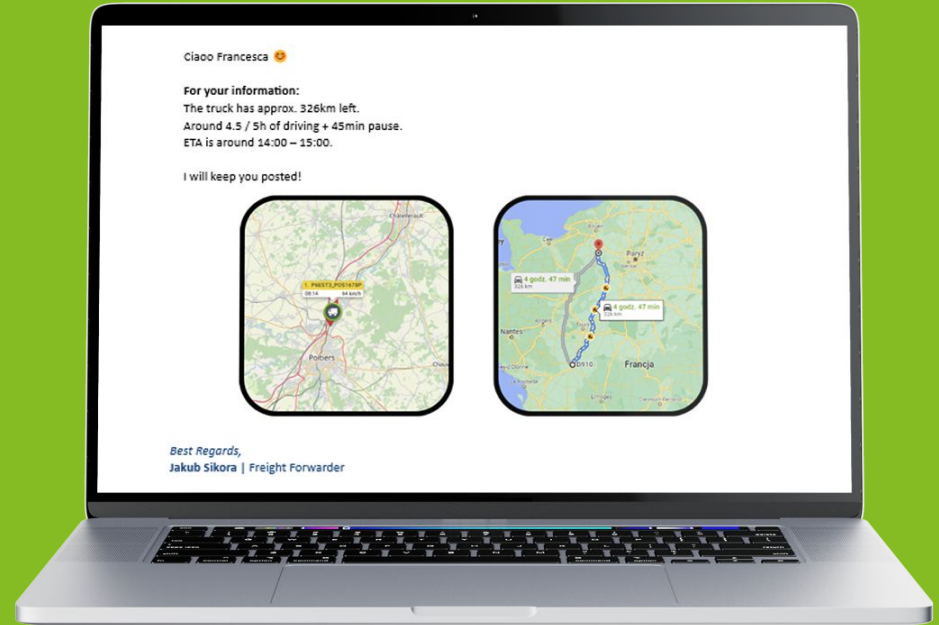




# Communication & Updates

Being always in touch and updated during the transport is crucial.  
This is our most important value.

We stick to email updates as we believe that this way of staying in touch is the best for whole shipping process. Our forwarders can speak in 5 languages and are available 24/7 making communication not only precise but also swift and smooth. We always keep it short and clear.





Thanks to that you are always in touch with one of our forwarders and always updated regarding the transport status.

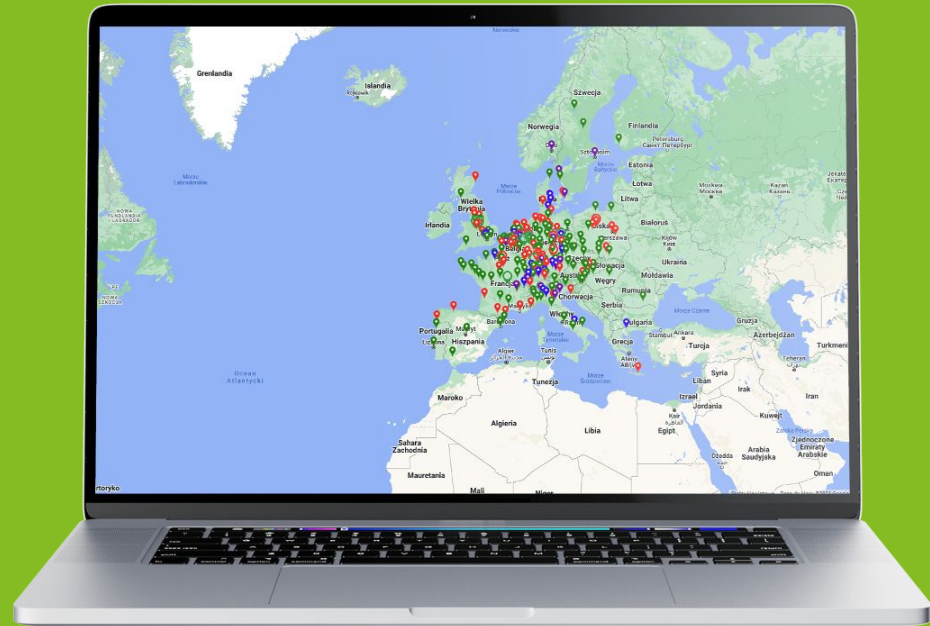
Additionally we always send P.O.D. within 15 minutes after the delivery. In case of need our forwarders can contact sender/receiver to set up the shipment, arrange the delivery or learn about any special conditions of the shipment.

# Map & Scoring

One of our main tool for searching the available cars is our internal map.

We are updating it every day using the data provided by our best carriers.

It helps our forwarders to find the vehicles quickly in the locations needed.





## The most important elements of our offer:



current update



high quality of internal  
communication



speed, quality and reliability  
of delivery guaranteed



trustworthy and verified  
carriers



no need to be proficient in  
TIMO and TRANS



Additionally we have our internal evaluation-scoring system. This way after every completed shipment we value transport companies and therefore use only the best of them. There are several points to be assessed like:

- A. Communication
- B. Speed of delivery
- C. Drivers behaviour

This way we are able to avoid any complications during the transport process.

# About us

**We strive for a dynamic, creative and goal-oriented culture  
that is based on our core values:**

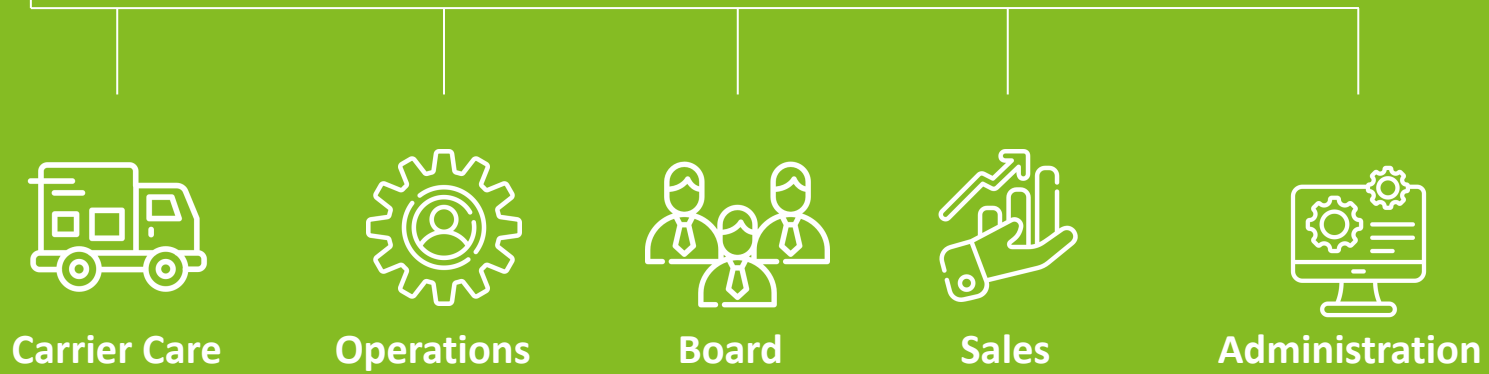
**RELIABILITY**

**COMMITMENT**

**SAFETY**

Our experienced team is making sure these values are the  
guiding principles to satisfy the client's needs.

# Company structure







**Artur Wiszniewski**  
Board Advisor

**CORRESPONDENCE ADDRESS:**

Al. Armii Krajowej 220 / Pawilon 2  
43-300 Bielsko-Biała, Poland

**E-MAIL:**

[artur@gmptrasporti.com](mailto:artur@gmptrasporti.com)

**MOBILE:**

(+48) 795 400 608

**GET IN TOUCH**